

CASE STUDY **INSIGHTS**



Project

**BRITISH LAND – 10
EXCHANGE SQUARE,
LONDON
EC2A 2BR**

CHALLENGE OVERVIEW

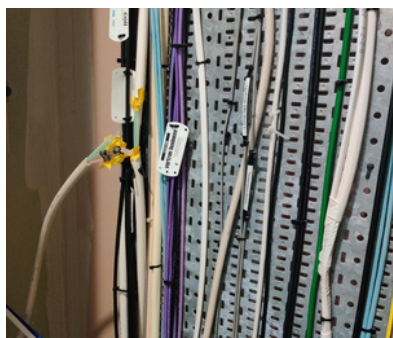


THE ZETTA SOLUTION



10 EXCHANGE SQUARE Project

British Land needed to provide fibre connectivity for their tenant, an American bank moving into the 8th floor of 10 Exchange Square. A wayleave agreement, required for securing legal access to install fibre cabling across multiple landlords' properties, is usually a lengthy and expensive process. With the tenant's move-in fast approaching, there simply wasn't time to pursue traditional wayleave agreements, which can take months to finalise and often involve significant additional costs.



THE RESULT

The project was completed within a month from enquiry to handover, much faster and more cost-effective than pursuing a traditional wayleave. Not only did this meet BBH's urgent deadline, but the infrastructure also has the potential to support future tenant services in the building.